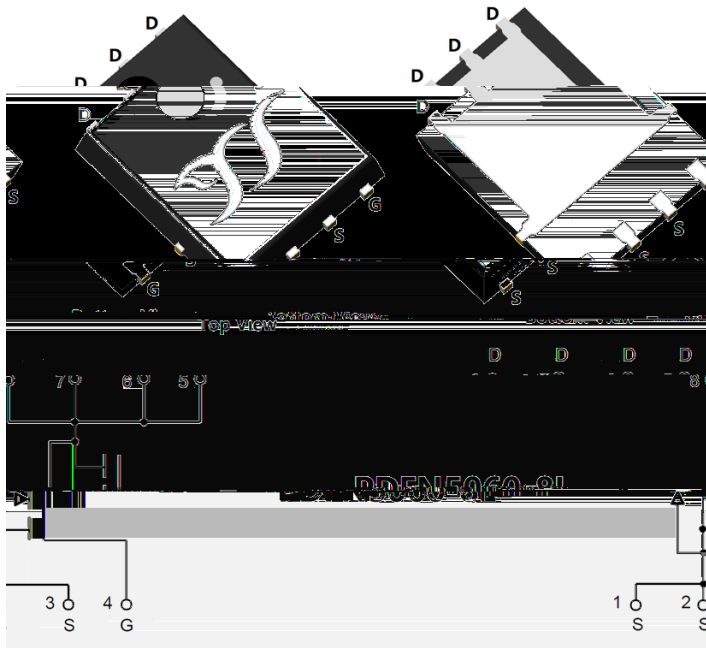




N-Channel Enhancement Mode Field Effect Transistor



Product Summary

V_{DS}	120V
I_D	88A
$R_{DS(ON)}$ (at $V_{GS}=10V$)	9m
$R_{DS(ON)}$ (at $V_{GS}=6V$)	12m
100% EAS Tested	
100% V_{DS} Tested	

General Description

- Split gate trench MOSFET technology
- Excellent package for heat dissipation
- High density cell design for low $R_{DS(ON)}$
- Moisture Sensitivity Level 1
- Epoxy Meets UL 94 V-0 Flammability Rating
- Halogen Free

Applications

- Power switching application
- Uninterruptible power supply
- DC-DC converter

Absolute Maximum Ratings ($T_A=25$ unless otherwise noted)

Parameter		Symbol	Limit	Unit
Drain-source Voltage		V_{DS}	120	V
Gate-source Voltage		V_{GS}	± 20	V
Drain Current	$T_A=25^\circ C$	I_D	9	A
	$T_A=100^\circ C$		5	
	$T_C=25^\circ C$		88	
	$T_C=100^\circ C$		55	
Pulsed Drain Current ^A		I_{DM}	300	A
Avalanche energy ^B		EAS	400	mJ
Total Power Dissipation ^C	$T_A=25^\circ C$	P_D	2.5	W
	$T_A=100^\circ C$		1	
	$T_C=25^\circ C$		104	
	$T_C=100^\circ C$		41	
Junction and Storage Temperature Range		T_J, T_{STG}	-55 +150	$^\circ C$

Thermal resistance

Parameter		Symbol	Typ	Max	Units
Thermal Resistance Junction-to-Ambient ^D	Steady-State	R_{JA}	40	50	$^\circ C/W$
Thermal Resistance Junction-to-Case	Steady-State	R_{JC}	1	1.2	

Ordering Information (Example)

PREFERRED P/N	PACKING CODE	Marking	MINIMUM PACKAGE(pcs)	INNER BOX QUANTITY(pcs)	OUTER CARTON QUANTITY(pcs)	DELIVERY MODE
YJG88G12B	F1	YJG88G12B	5000	10000	100000	13" reel



YJG88G12B

Electrical Characteristics ($T_J=25$ unless otherwise noted)

Parameter	Symbol	Conditions	Min	Typ	Max	Units
Static Parameter						
Drain-Source Breakdown Voltage	BV_{DSS}	$V_{GS}=0V, I_D=250\mu A$	120	-	-	V
Zero Gate Voltage Drain Current	I_{DSS}	$V_{DS}=120V, V_{GS}=0V$	-	-	1	μA
		$V_{DS}=120V, V_{GS}=0V, T_J=150^\circ C$	-	-	100	
Gate-Body Leakage Current	I_{GSS}	$V_{GS}=\pm 20V, V_{DS}=0V$	-	-	± 100	nA
Gate Threshold Voltage	$V_{GS(th)}$	$V_{DS}=V_{GS}, I_D=250\mu A$	2	3.2	4	V
Static Drain-Source On-Resistance	$R_{DS(on)}$	$V_{GS}=10V, I_D=44A$	-	7	9	m
		$V_{GS}=10V, I_D=20A$	-	7	9	
		$V_{GS}=6V, I_D=20A$	-	8.5	12	
Diode Forward Voltage	V_{SD}	$I_S=44A, V_{GS}=0V$	-	0.9	1.2	V
Gate resistance	R_G	$f=1MHz$	-	1	-	
Maximum Body-Diode Continuous Current	I_S		-	-	88	A
Dynamic Parameters						
Input Capacitance	C_{iss}	$V_{DS}=60V, V_{GS}=0V, f=1MHz$	-	4630	-	μF
Output Capacitance	C_{oss}		-	440	-	
Reverse Transfer Capacitance	C_{riss}		-	10	-	
Switching Parameters						
Total Gate Charge	Q_g	$V_{GS}=10V, V_{DS}=60V, I_D=44A$	-	80	-	nC
Gate-Source Charge	Q_{gs}		-	30	-	
Gate-Drain Charge	Q_{gd}		-	10	-	
Reverse Recovery Charge	Q_{rr}	$I_F=44A, di/dt=500A/us$	-	210	-	nC
Reverse Recovery Time	t_{rr}		-	90	-	ns
Turn-on Delay Time	$t_{D(on)}$	$V_{GS}=10V, V_{DD}=60V, I_D=44A$ $R_{GEN}=2.2$	-	25	-	ns
Turn-on Rise Time	t_r		-	40	-	
Turn-off Delay Time	$t_{D(off)}$		-	40	-	
Turn-off fall Time	t_f		-	35	-	

A. Repetitive rating; pulse width limited by max. junction temperature.

B. $T_J=25^\circ C, V_{DD}=50V, V_{GS}=10V, R_G=25, L=2mH, I_{AS}=20A$.

C. P_d is based on max. junction temperature, using junction-case thermal resistance.

D. The value of R_{JA} is measured with the device mounted on the minimum recommend pad size, in the still air environment with $T_A=25^\circ C$. The maximum allowed junction temperature of $150^\circ C$. The value in any given application depends on the user's specific board design.



YJG88G12B

Typical Electrical and Thermal Characteristics Diagrams

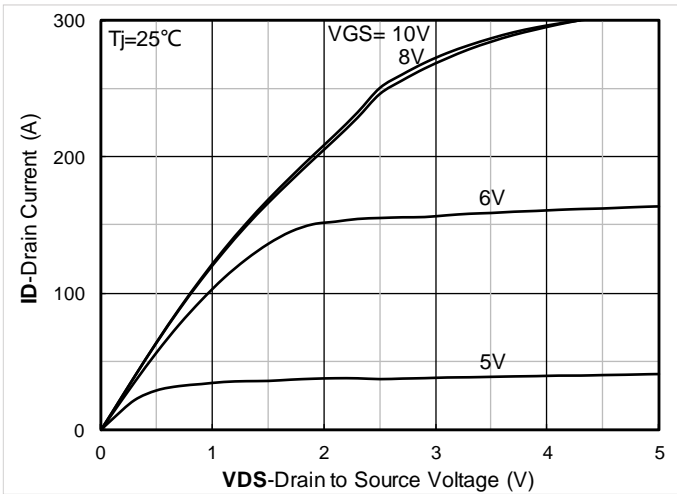


Figure 1. Output Characteristics

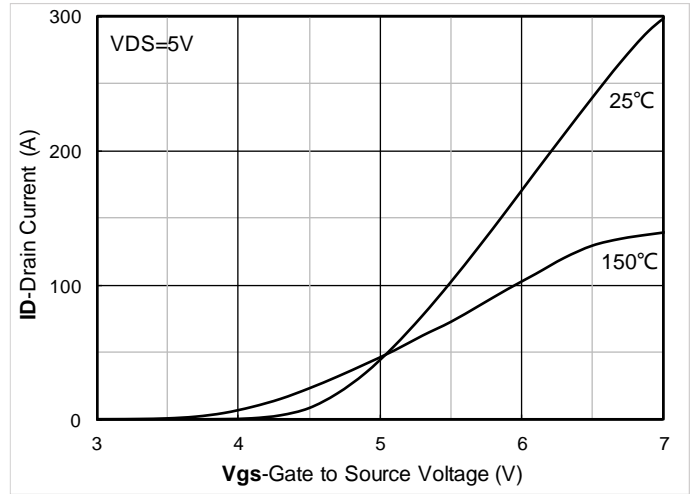


Figure 2. Transfer Characteristics

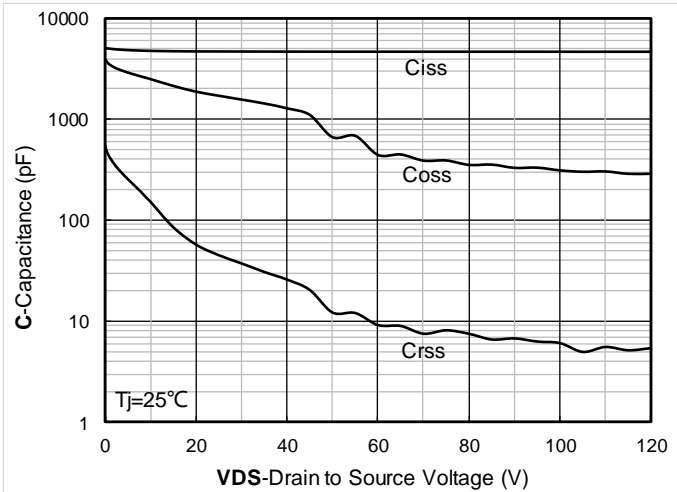


Figure 3. Capacitance Characteristics

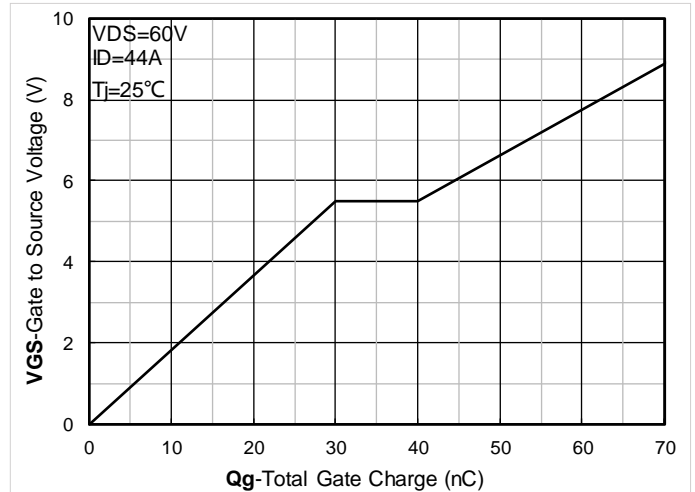


Figure 4. Gate Charge

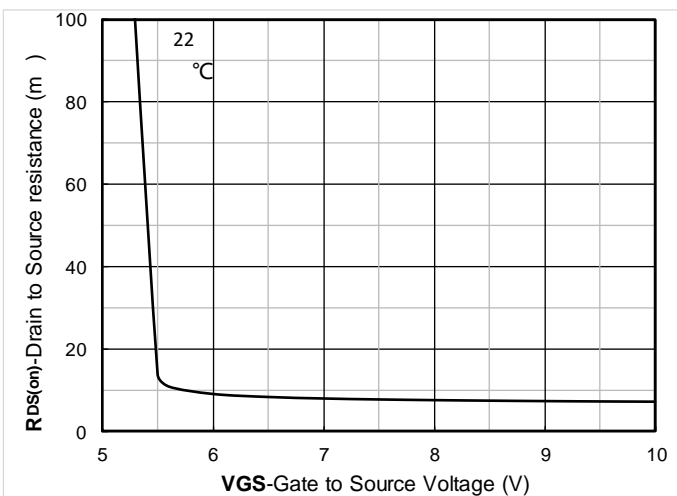


Figure 5. On-Resistance vs Gate to Source Voltage

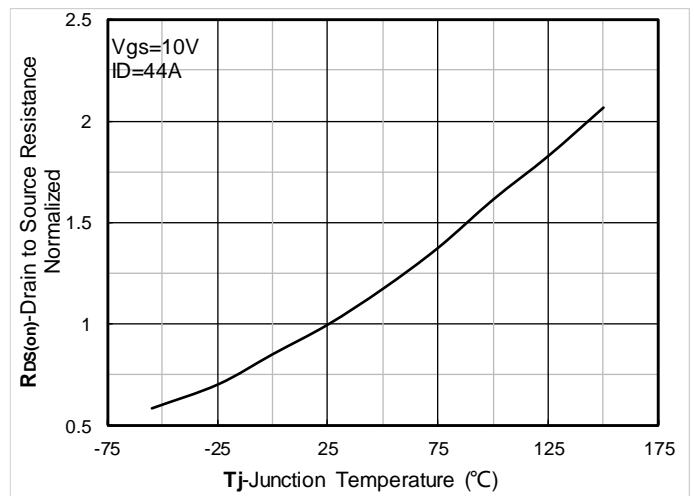


Figure 6. Normalized On-Resistance



YJG88G12B

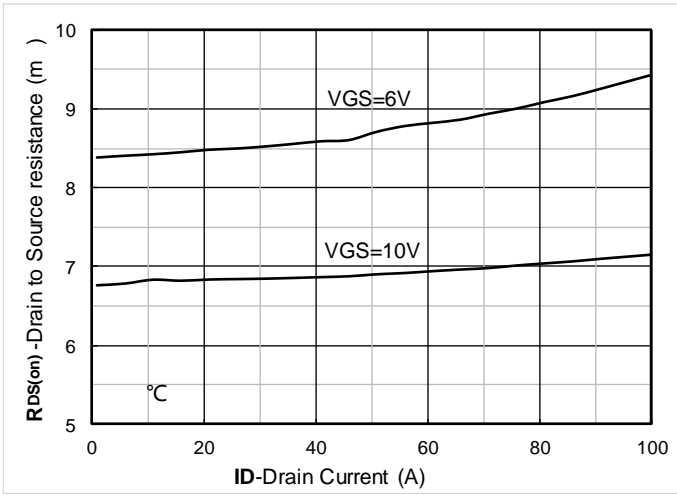


Figure 7. RDS(on) VS Drain Current

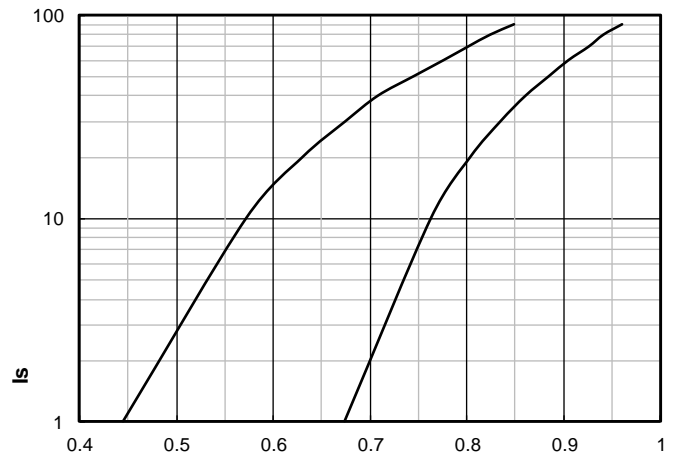


Figure 8. Forward characteristics of reverse diode

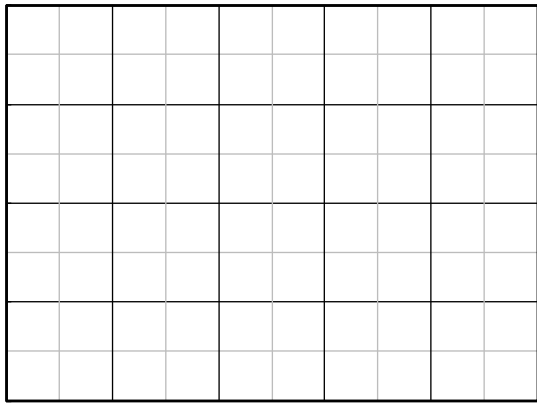


Figure 9. Normalized breakdown voltage

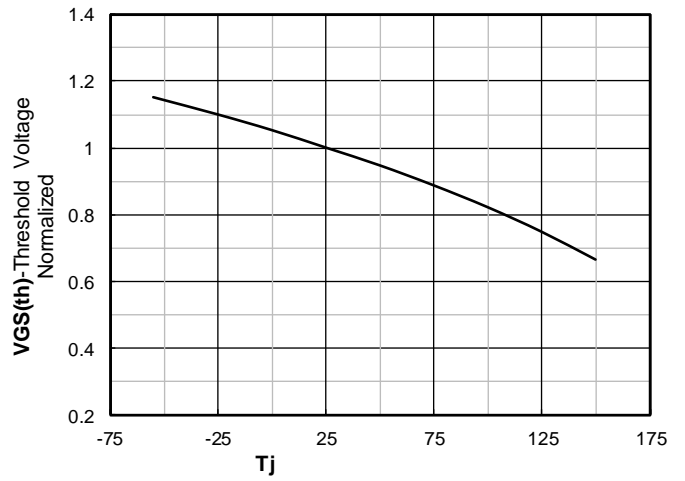


Figure 10. Normalized Threshold voltage

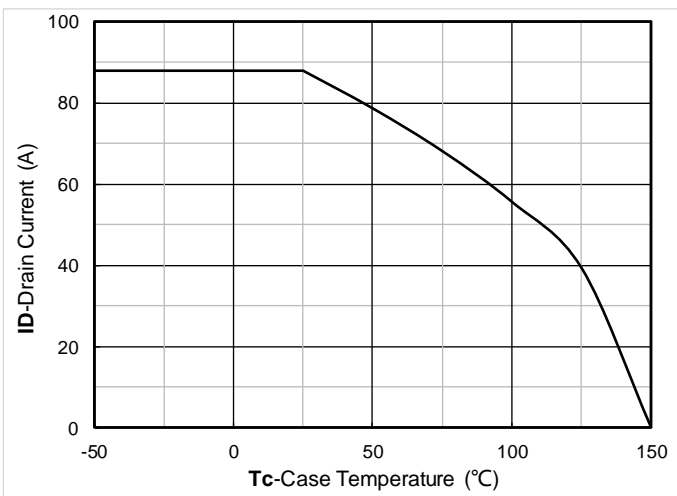


Figure 11. Current dissipation

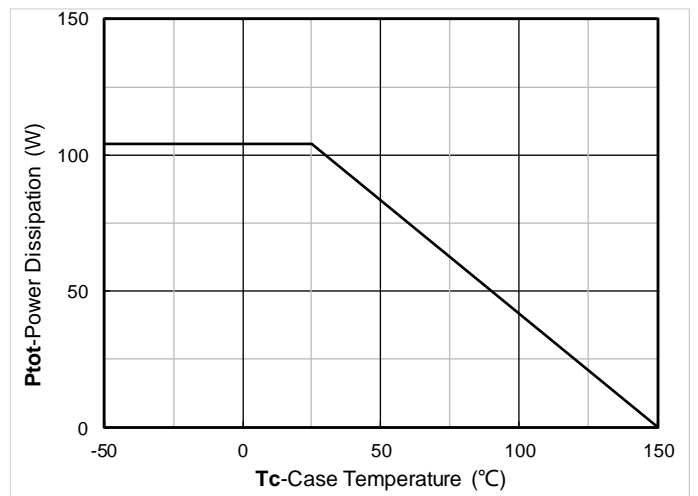


Figure 12. Power dissipation

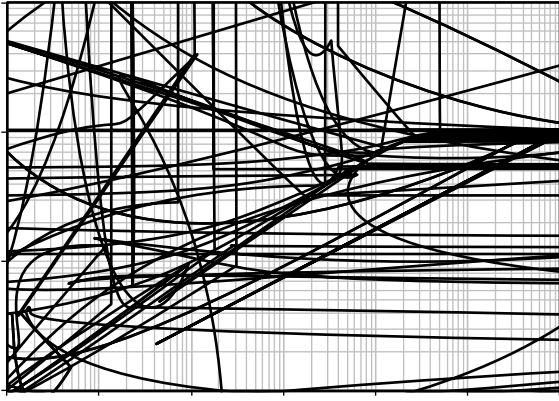


Figure 13. Maximum Transient Thermal Impedance

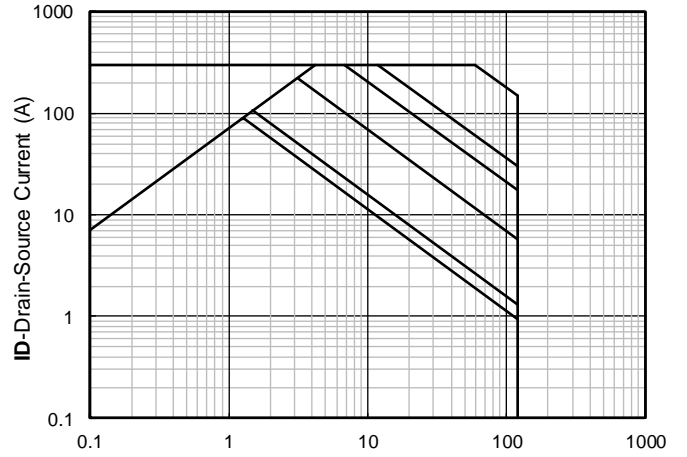


Figure 14. Safe Operation Area

Test Circuits & Waveforms

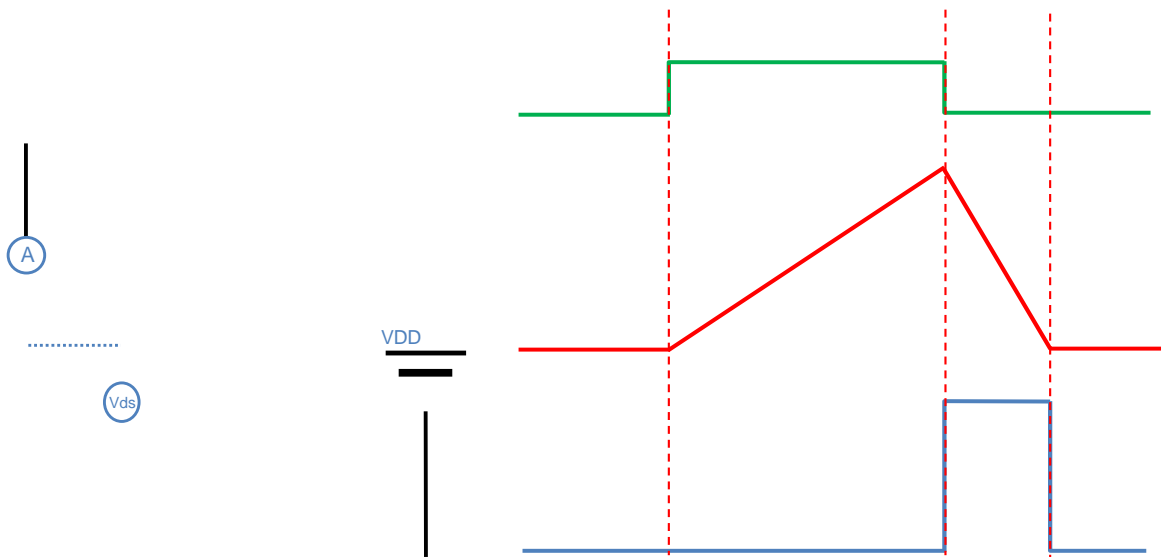


Figure A. Unclamped Inductive Switching (UIS) Test Circuit & Waveform

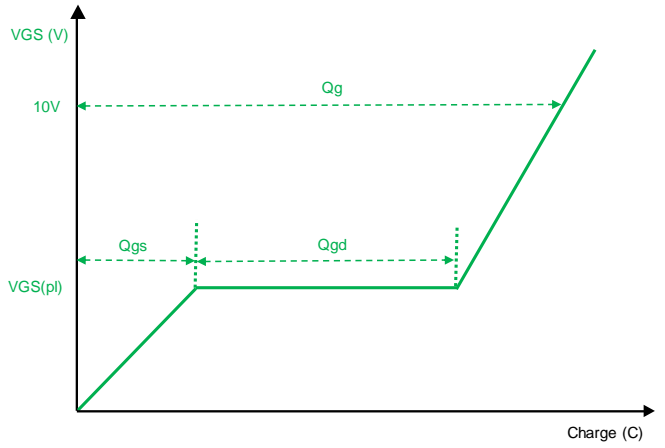
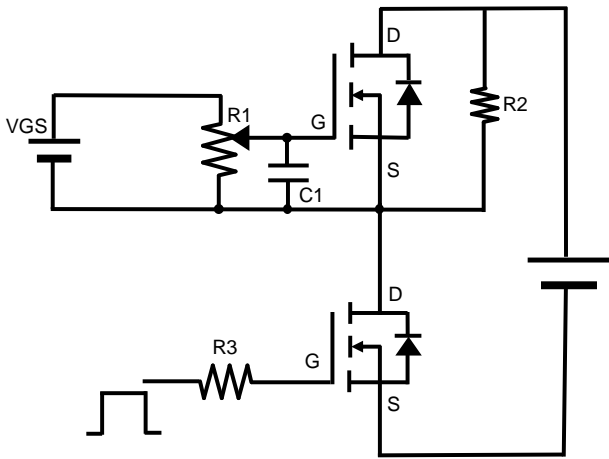


Figure B. Gate Charge Test Circuit & Waveform

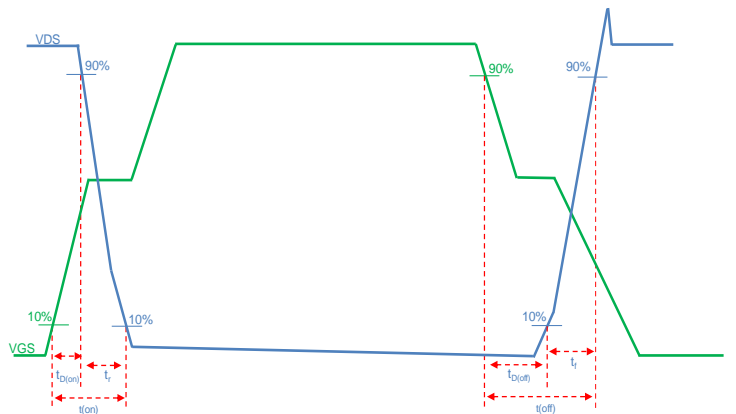
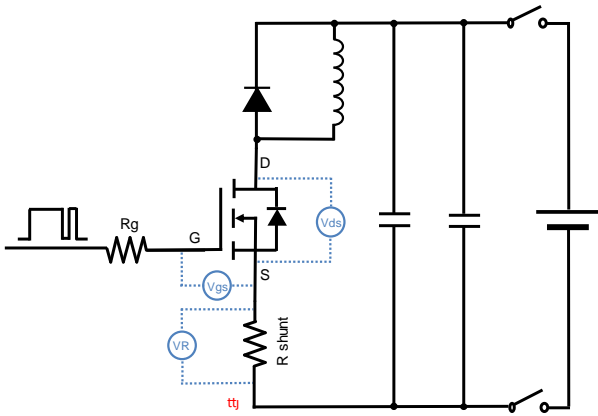


Figure C. Resistive Switching Test Circuit & Waveform

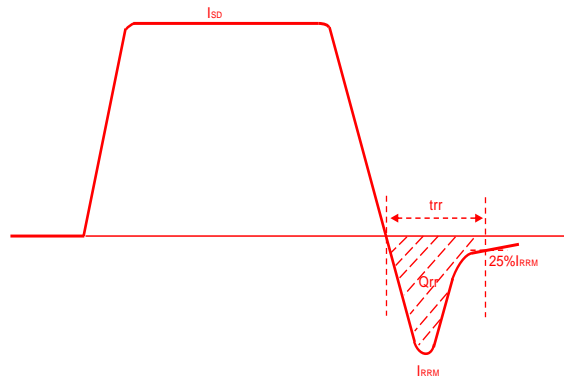
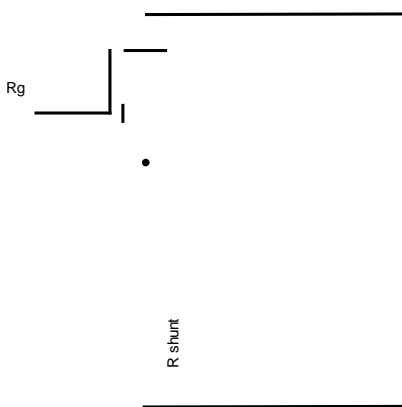
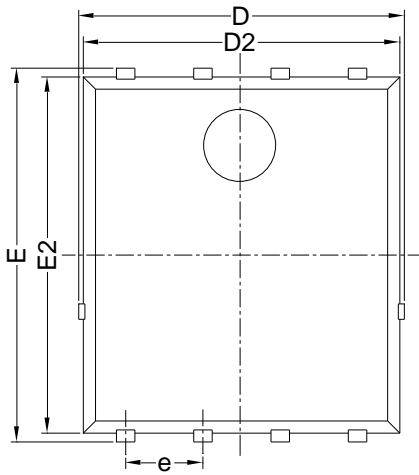


Figure D. Diode Recovery Test Circuit & Waveform

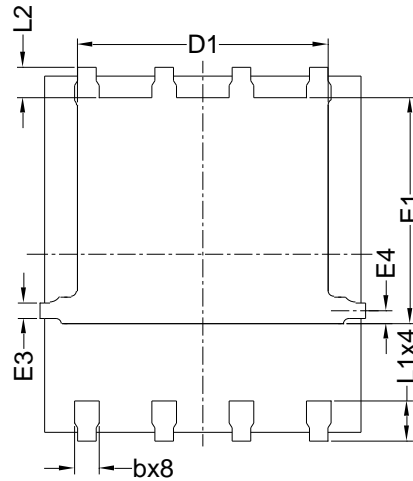


YJG88G12B

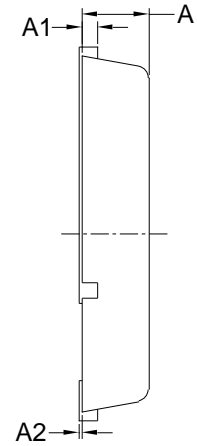
PDFN5060-8L-B-1.1MM Package information



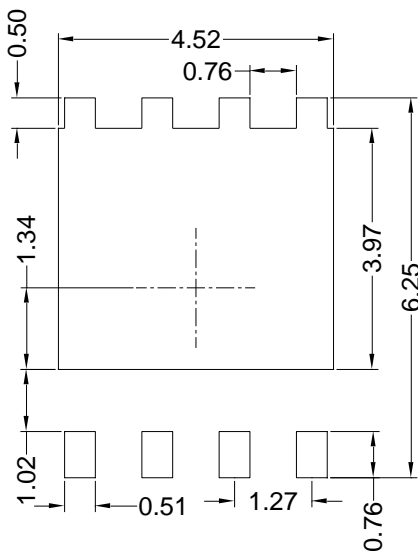
Top View



Bottom View



Side View



Suggested Solder Pad Layout
Top View

SYMBOL	MILLIMETER		
	MIN	NOM	MAX
D	5.15	5.35	5.55
E	5.95	6.15	6.35
A	1.00	1.10	1.20
A1	0.254 BSC		
A2			0.10
D1	3.92	4.12	4.32
E1	3.52	3.72	3.92
D2	5.00	5.20	5.40
E2	5.66	5.86	6.06
E3	0.254 REF		
E4	0.21 REF		
L1	0.56	0.66	0.76
L2	0.50 BSC		
b	0.31	0.41	0.51
e	1.27 BSC		

Note:

1. Controlling dimension: in millimeters.
2. General tolerance: ± 0.10 mm.
3. The pad layout is for reference purposes only.



YJG88G12B

Disclaimer

The information presented in this document is for reference only. Yangzhou Yangjie Electronic Technology Co., Ltd. reserves the right to make changes without notice for the specification of the products displayed herein to improve reliability, function or design or otherwise.

The product listed herein is designed to be used with ordinary electronic equipment or devices, and not designed to be used with equipment or devices which require high level of reliability and the malfunction of which would directly endanger human life (such as medical instruments, transportation equipment, aerospace machinery, nuclear-reactor controllers, fuel controllers and other safety devices), Yangjie or anyone on its behalf, assumes no responsibility or liability for any damages resulting from such improper use of sale.

This publication supersedes & replaces all information previously supplied. For additional information, please visit our website <http://www.21yangjie.com> , or consult your nearest Yangjie's sales office for further assistance.