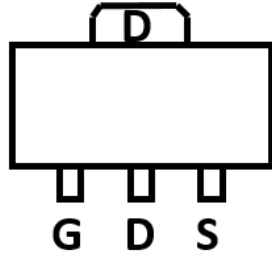
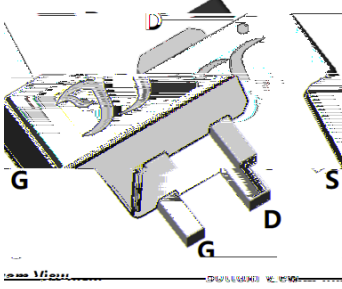




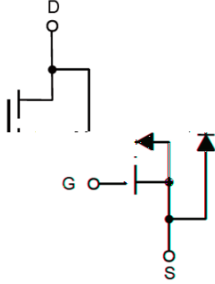
N-Channel Enhancement Mode Field Effect Transistor

Product Summary



General Description

SOT-89



Applications

Absolute Maximum Ratings

Parameter	Symbol	Limit	Unit

Ordering Information

PREFERRED P/N	PACKING CODE	Marking	MINIMUM PACKAGE(pcs)	INNER BOX QUANTITY(pcs)	OUTER CARTON QUANTITY(pcs)	DELIVERY MODE



YJH03N06B

Typical Performance Characteristics

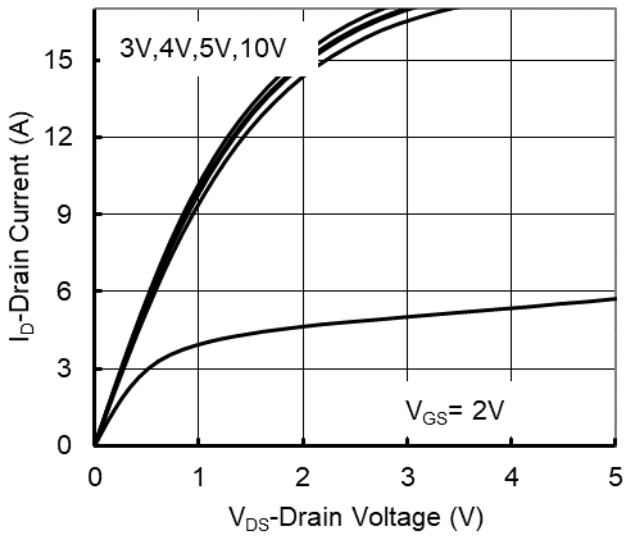


Figure1. Output Characteristics

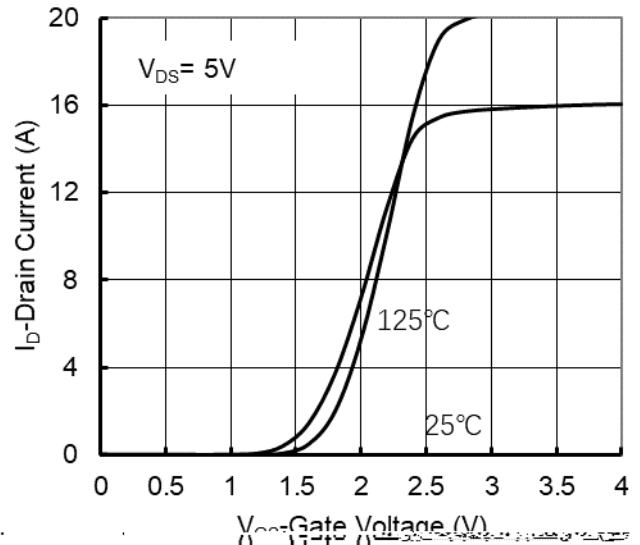


Figure2. Transfer Characteristics

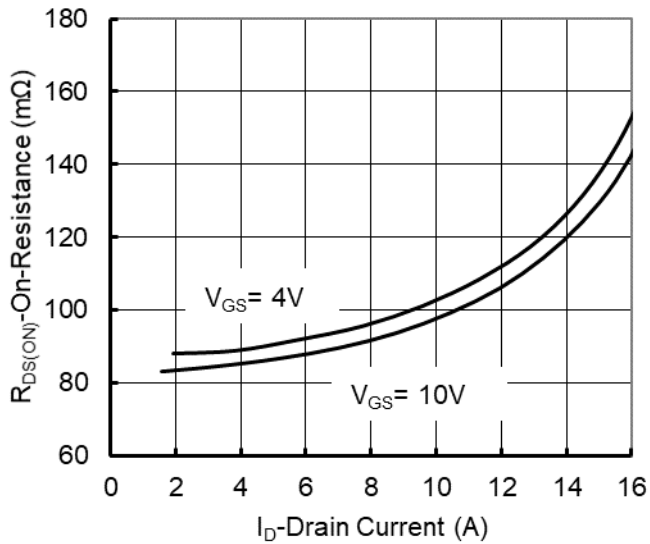


Figure 3: On-Resistance vs. Drain Current and Gate Voltage

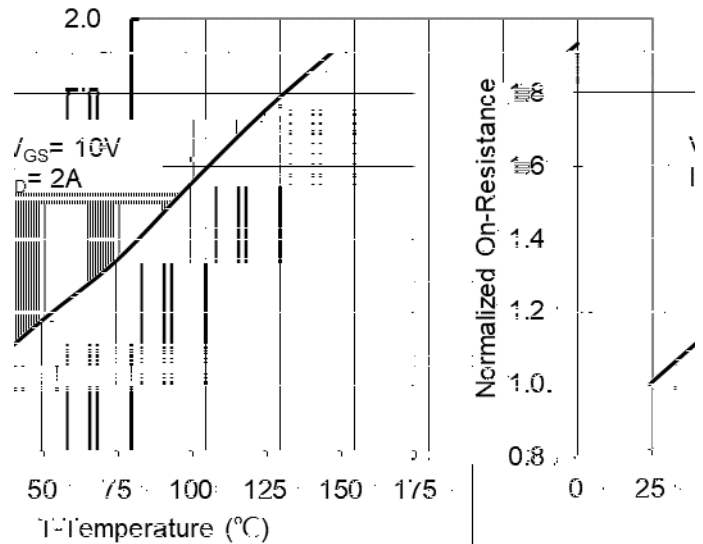


Figure 4: On-Resistance vs. Junction Temperature

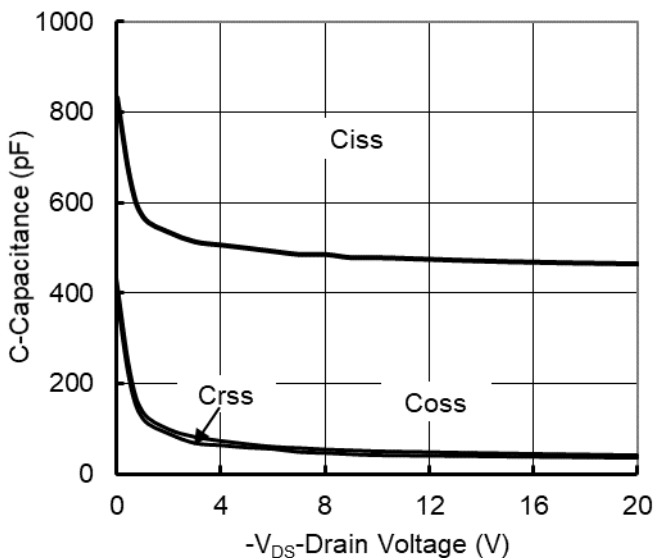


Figure5. Capacitance Characteristics

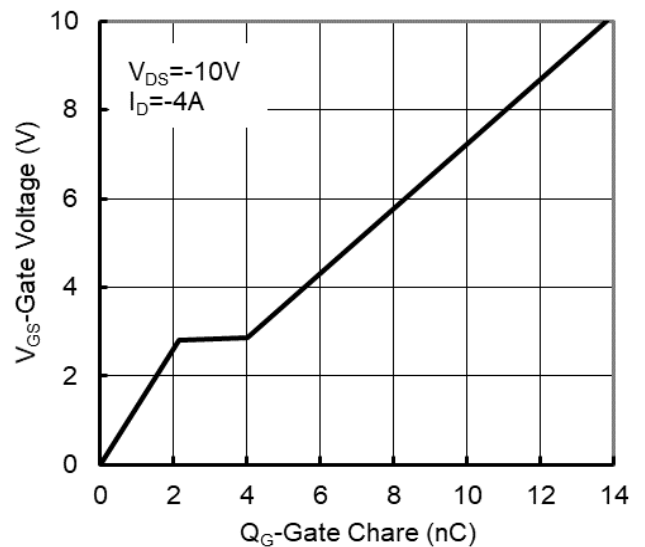


Figure6. Gate Charge



YJH03N06B

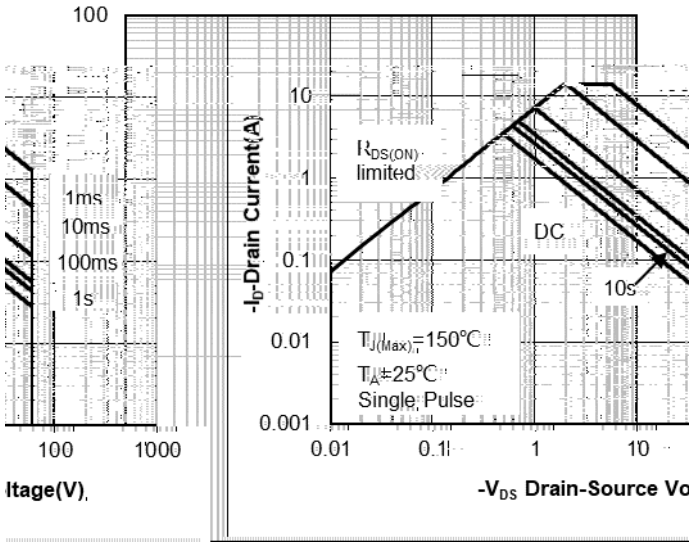


Figure 7. Safe Operation Area

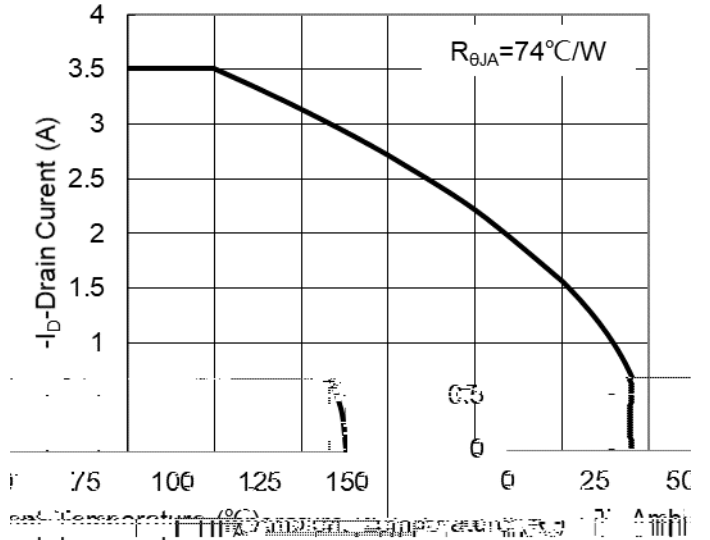


Figure 8. Maximum Continuous Drain Current vs Ambient Temperature

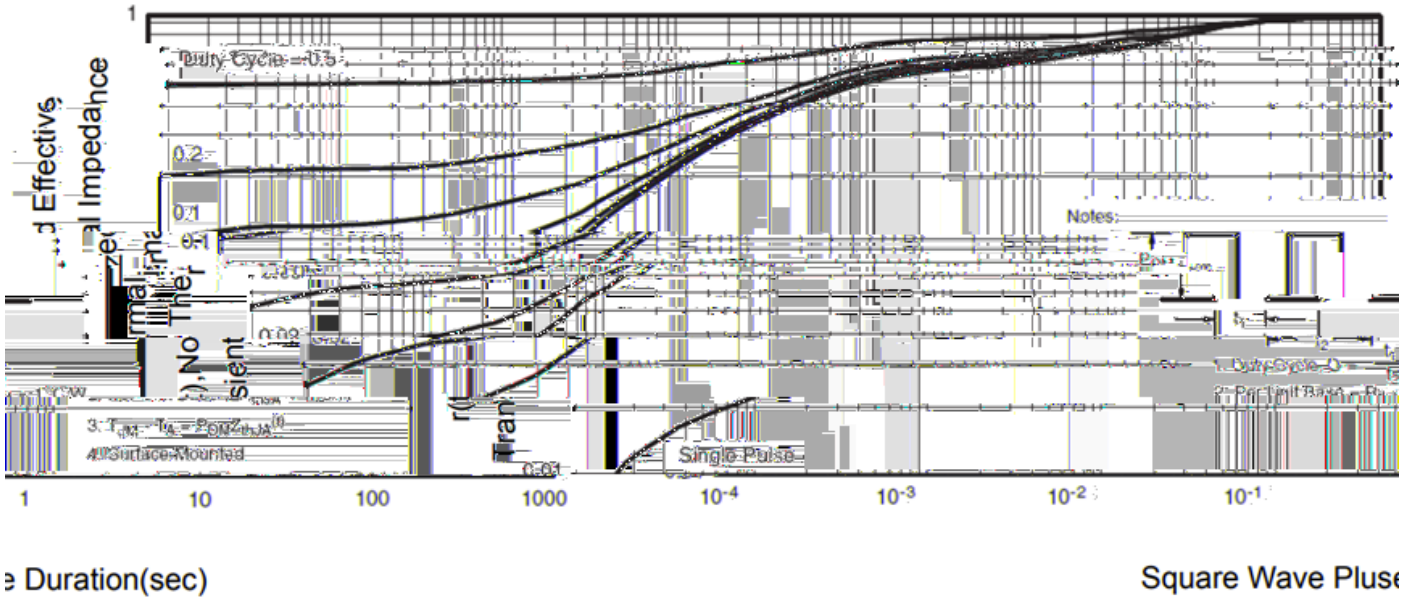
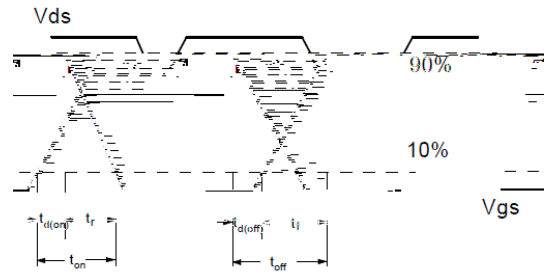
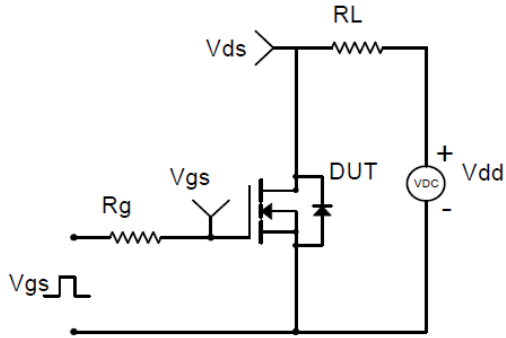


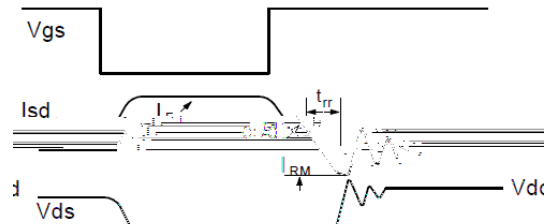
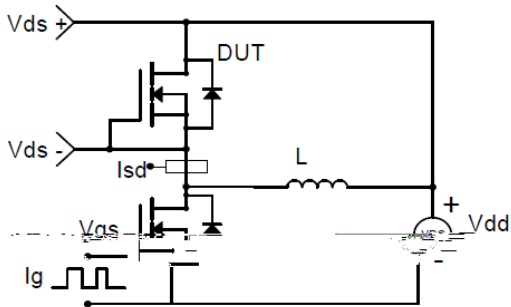
Figure 9. Normalized Maximum Transient Thermal Impedance



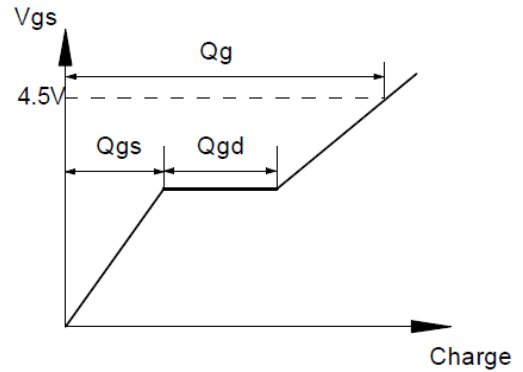
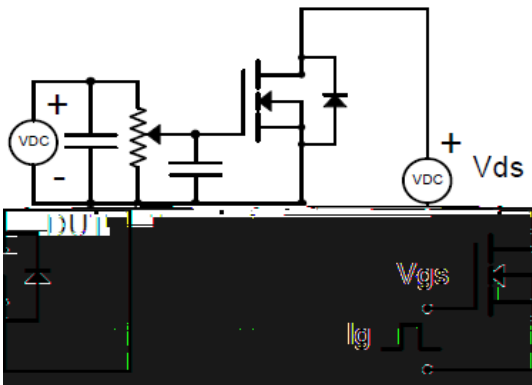
YJH03N06B



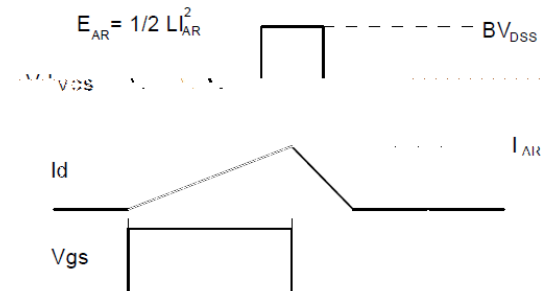
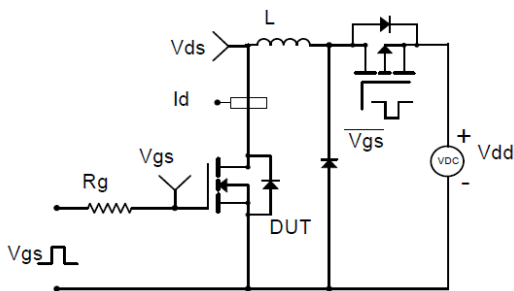
Resistive Switching Test Circuit & Waveforms



Diode Recovery Test Circuit & Waveforms



Gate Charge Test Circuit & Waveform

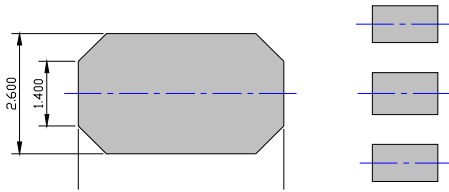
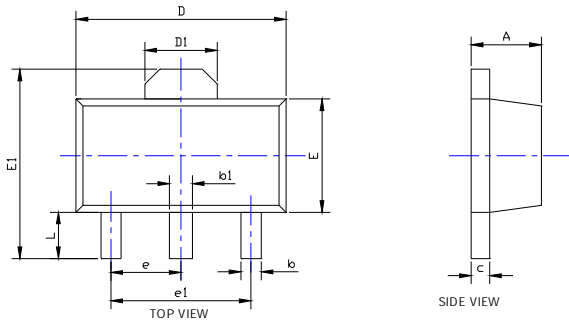


Unclamped Inductive Switching (UIS) Test Circuit & Waveforms



YJH03N06B

SOT-89 Package Information



SUGGESTED SOLDER PAD LAYOUT

SYMBOL	DIMENSIONS					
	INCHES			Millimeter		
	MIN.	NOM.	MAX.	MIN.	NOM.	MAX.
A	0.055	0.059	0.063	1.400	1.500	1.600
b	0.014	---	0.020	0.350	---	0.520
b1	0.016	---	0.023	0.400	---	0.580
c	0.014	---	0.017	0.350	---	0.440
D	0.173	0.177	0.181	4.400	4.500	4.600
D1	0.061REF			1.550REF		
E	0.093	0.096	0.100	2.350	2.450	2.550
E1	0.155		0.167	3.940		4.250
e	0.059TYP			1.500TYP		
e1	0.118TYP			3.000TYP		
L	0.035	0.039	0.043	0.900	1.000	1.100



YJH03N06B

Disclaimer
