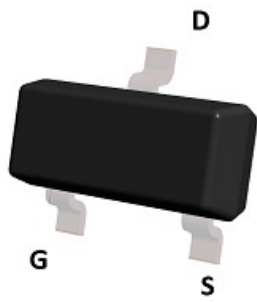




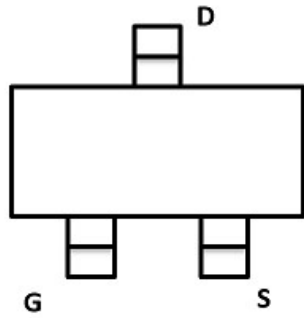
YJL10P02AL

P-Channel Enhancement Mode Field Effect Transistor

Product Summary

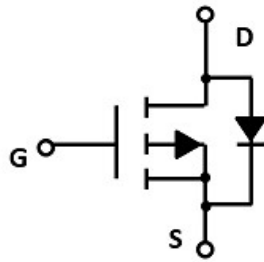


Top View



General Description

SOT-23-3L



Typical Performance Characteristics

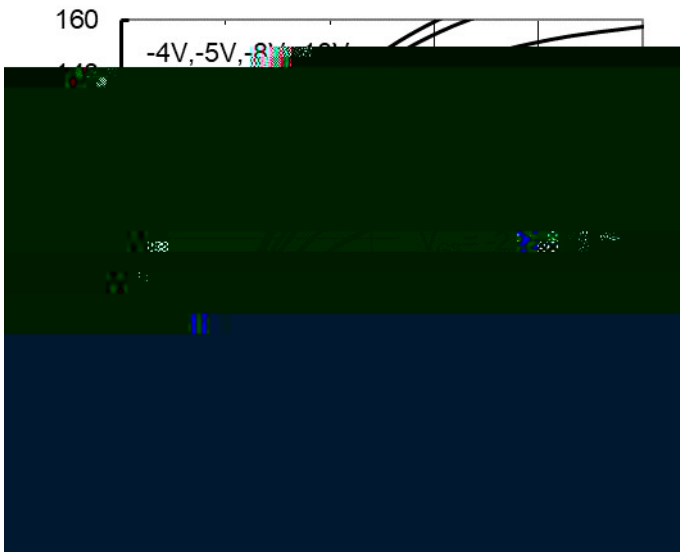


Figure 1. Output Characteristics

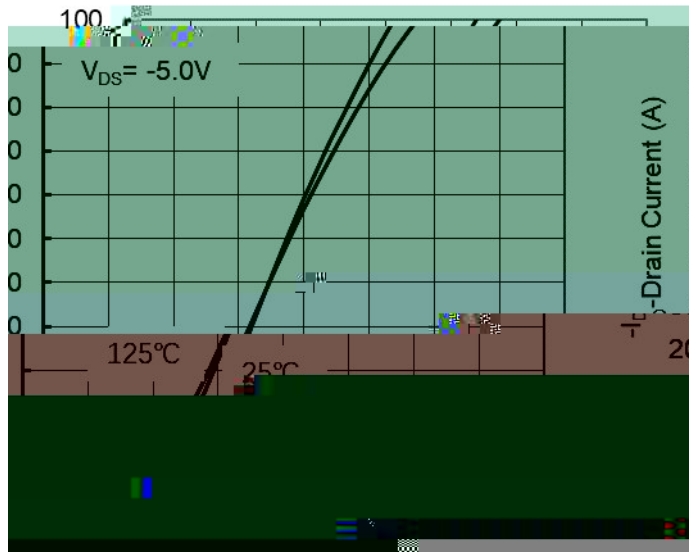


Figure 2 Transfer Characteristics

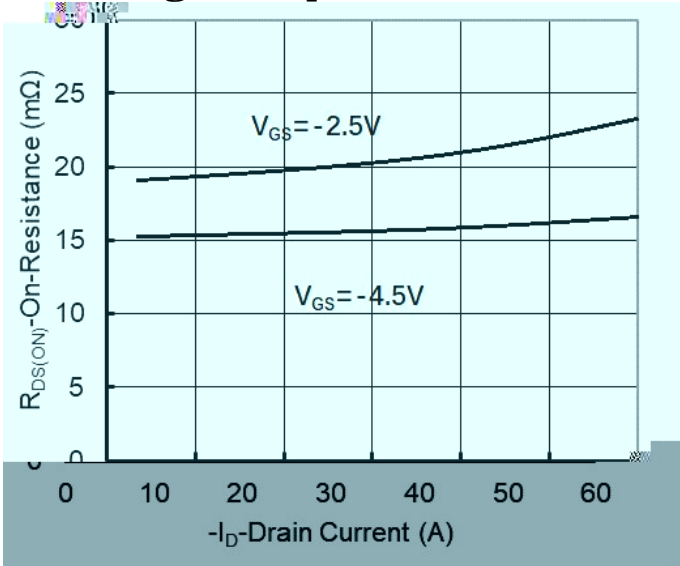


Figure 3 On-Resistance vs. Drain Current and Gate Voltage

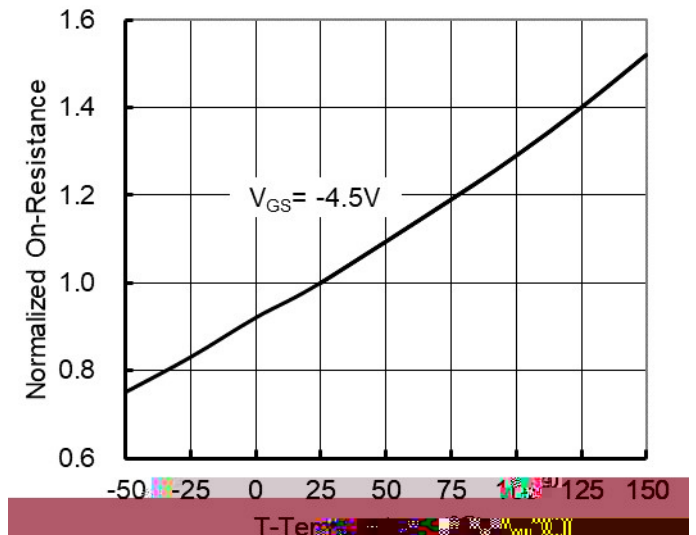


Figure 4 On-Resistance vs. Junction Temperature

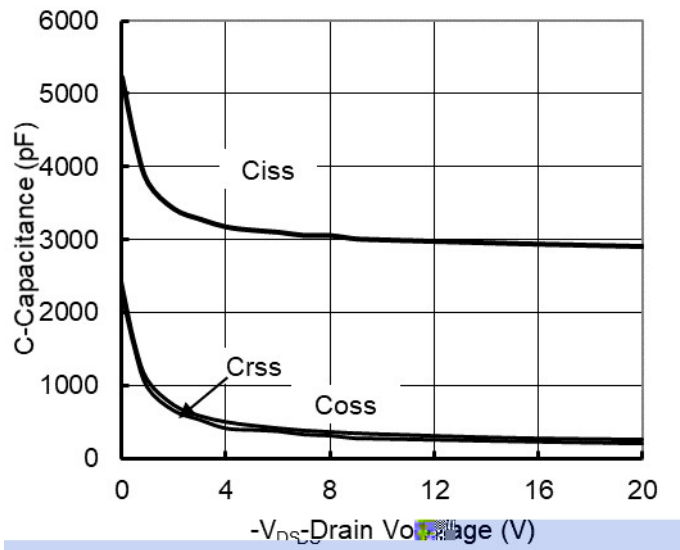


Figure 5. Capacitance Characteristics

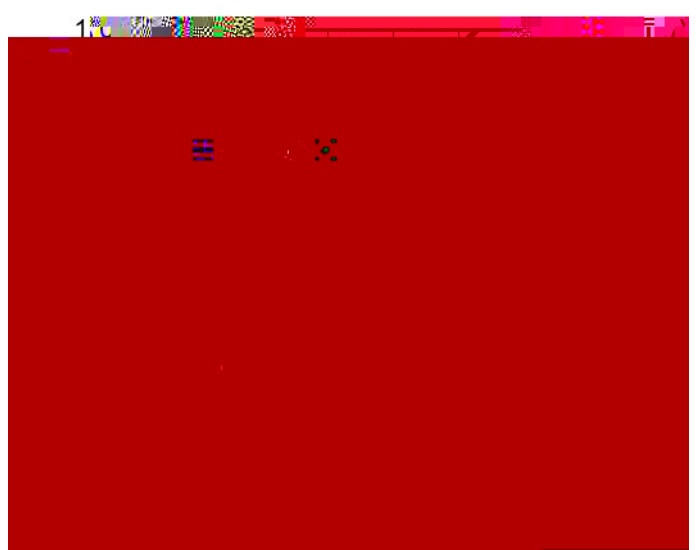


Figure 6. Gate Charge

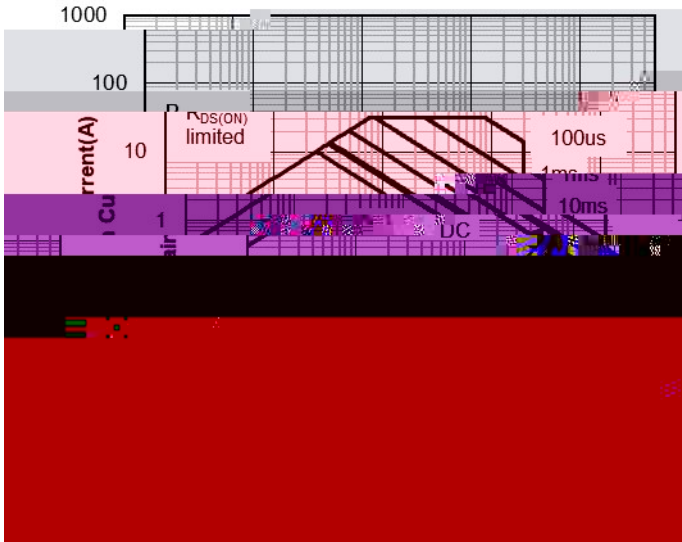


Figure 7. Safe Operation Area

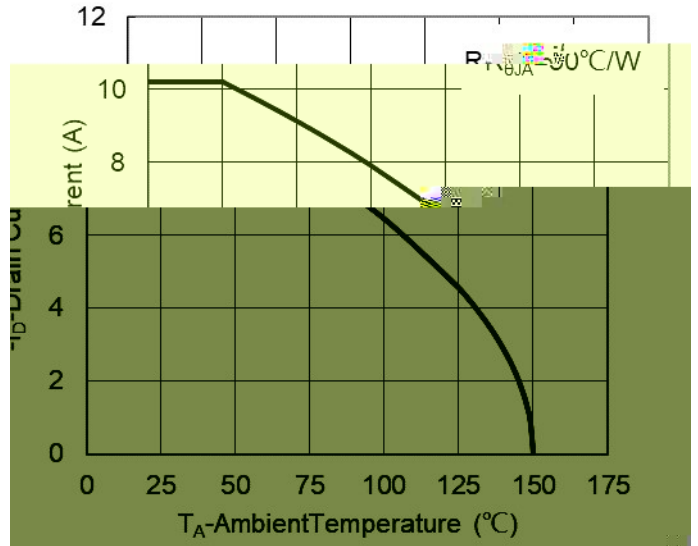


Figure 8 Maximum Continuous Drain Current vs Case Temperature

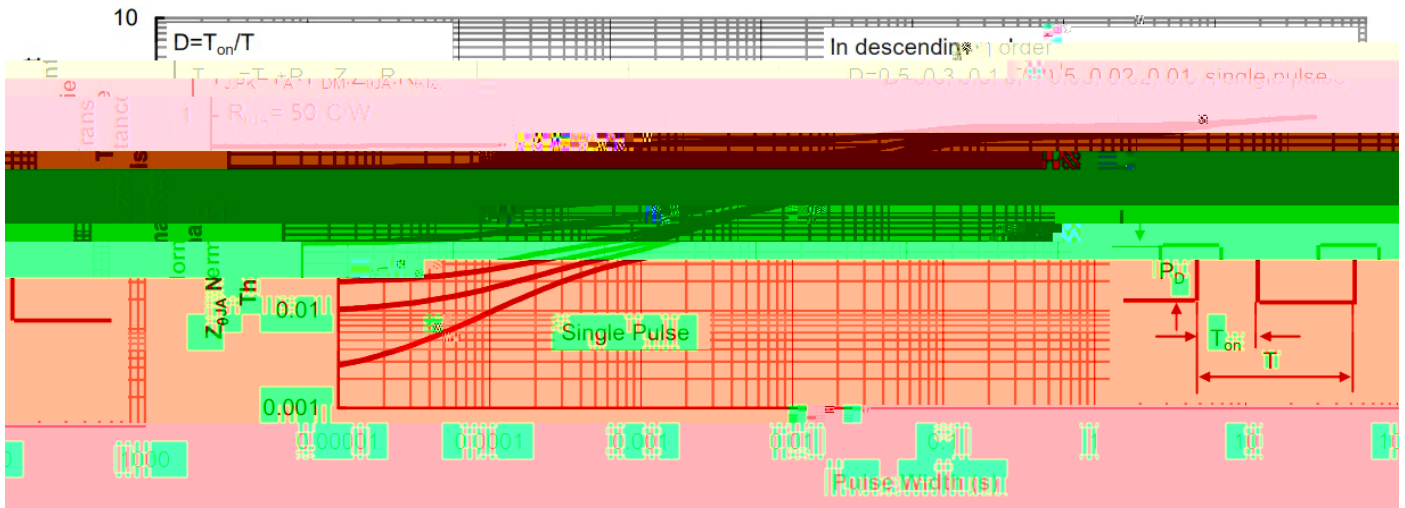
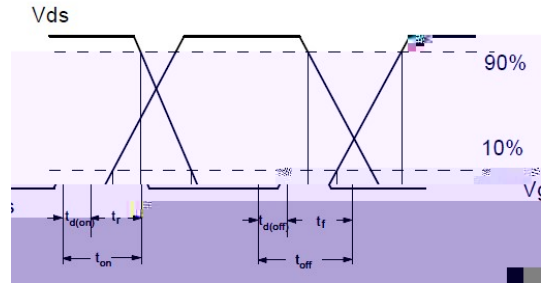
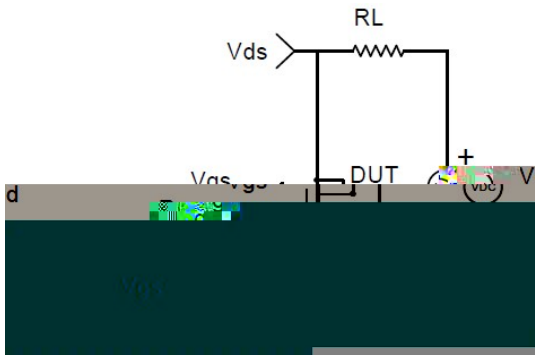
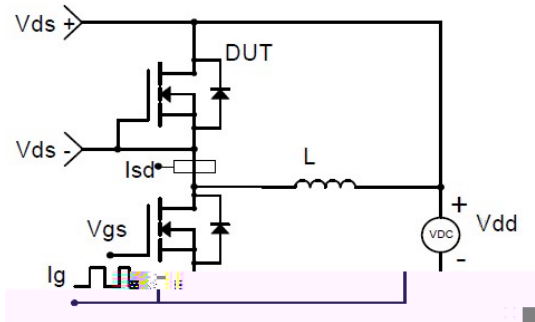


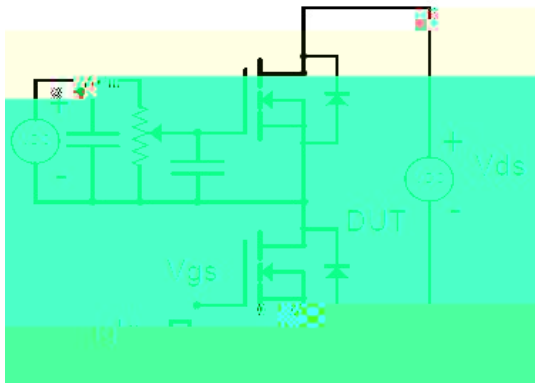
Figure 9. Single Pulse SOA



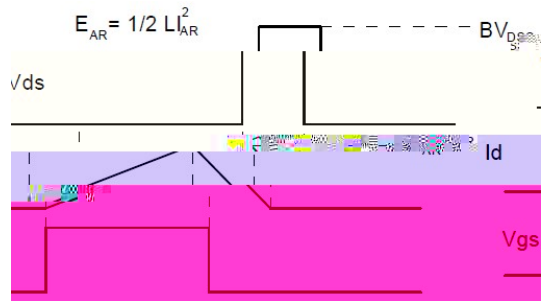
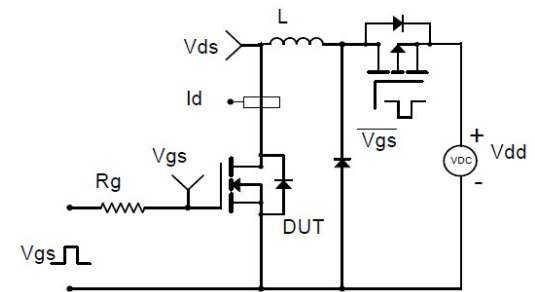
Resistive Switching Test Circuit & Waveforms



Diode Recovery Test Circuit & Waveforms



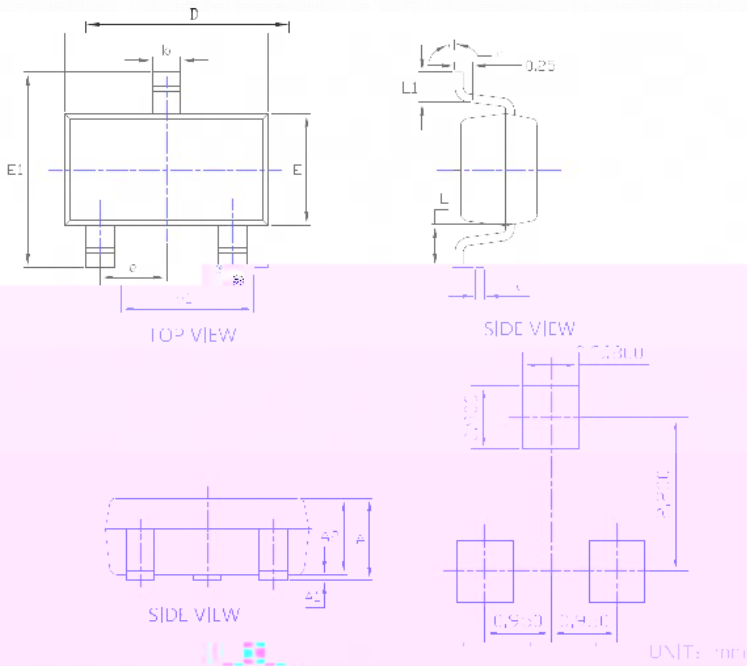
Gate Charge Test Circuit & Waveform



Unclamped Inductive Switching (UIS) Test Circuit & Waveforms



SOF-23 3L Package information



SYMBOL	DIMENSIONS					
	INCHES			Millimeter		
	MIN.	NOM.	MAX.	MIN.	NOM.	MAX.
A	0.041	---	0.049	1.050	---	1.250
AL	0.000	---	0.008	0.100	---	0.200

A1	0.041	0.045	0.05	0.07	0.10	0.20
L	0.027	0.030	0.033	0.30	0.450	0.700
e	0.007	---	0.008	0.200	---	0.400
f	0.11	0.20	0.25	0.27	0.275	0.30
E	0.000	0.000	0.000	0.000	0.000	0.000
E1	0.000	0.000	0.000	0.000	0.000	0.000
Z	COTTER					
F1	0.071	0.075	0.077	0.80	0.90	0.90
L	COTTER					
LS	0.027	0.028	0.029	0.300	0.400	0.600
	0"	---	0"	0"	---	0"

NOTE:
 1. PACKAGE BODY SIZES EXCLUDE MOLD FLASH AND GATE BURRS.
 2. TOLERANCE 0.1mm UNLESS OTHERWISE SPECIFIED.
 3. THE PAD LAYOUT IS FOR REFERENCE PURPOSES ONLY.





YJL10P02AL

Disclaimer
