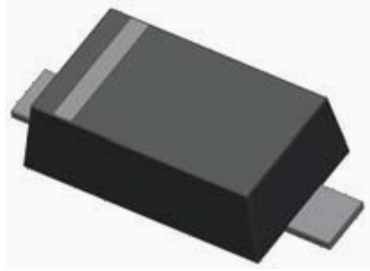


Small-Signal Fast Switching Diodes

Features

VR 75V
I_FAV 200mA



Typical Applications

Fast Switching Speed

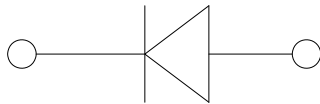
Mechanical Data

Package: SOD523

Terminals: Tin plated leads, solderable per J-STD-002 and JESD22-B102

Polarity: Cathode line denotes the cathode end

Marking: S1



Maximum Ratings (T_a=25°C Unless otherwise specified)

PARAMETER	SYMBOL	UNIT	Conditions	VALUE
Repetitive peak reverse voltage	V _{RRM}	V		75
Reverse voltage	V _R	V	IR=100uA	75
Peak forward surge current	I _{FSM}	A	Pulse width=1ms	1
Average forward current	I _{FAV}	mA		200
Power dissipation	P _{tot}	mW		200
Maximum junction temperature	T _j			150
Storage temperature range	T _{stg}			-55 to +150

Electrical Characteristics (T_a=25°C Unless otherwise specified)

PARAMETER	Symbol	UNIT	Conditions	Min	Max
Breakdown Voltage	V _R	V	IR=100uA	75	
Forward Voltage	V _F	V	IF=1mA		0.9
			IF=10mA		1.0
			IF=50mA		1.1
			IF=150mA		1.25
Reverse Leakage Current	I _R	nA	VR=75V		5
Reverse Recovery Time	T _{rr}	us	IF=IR=10mA, I _{rr} =0.1*IR, RL=100		3



Ordering Information (Example)



Outline Dimensions

Soldering Footprint



BAS716

Disclaimer

The information presented in this document is for reference only. Yangzhou Yangjie Electronic Technology Co., Ltd. reserves the right to make changes without notice for the specification of the products displayed herein to improve reliability, function or design or otherwise.

The product listed herein is designed to be used with ordinary electronic equipment or devices, and not designed to be used with equipment or devices which require high level of reliability and the malfunction of which would directly endanger human life (such as medical instruments, transportation equipment, aerospace machinery, nuclear-reactor controllers, fuel controllers and other safety devices), Yangjie or anyone on its behalf, assumes no responsibility or liability for any damages resulting from such improper use of sale.

This publication supersedes & replaces all information previously supplied. For additional information, please visit our website [http:// www.21yangjie.com](http://www.21yangjie.com) , or consult your nearest Yangjie's sales office for further assistance.